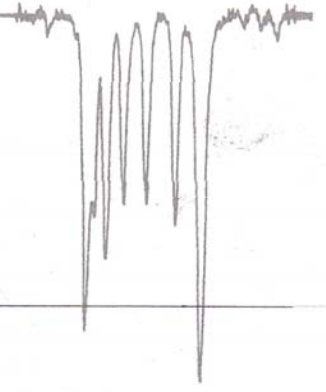


BARON CONSULTING CO.

HARRY AGAHIGIAN, Ph.D., DIRECTOR

analytical services

P.O. BOX 3337, MILFORD, CT 06460



January 30, 2009

Mr. John Liutkus
TPR2
161 Interstate Lane
Waterbury, CT 06705

RE: Analysis of one sample received 1/20/09
BC# 151027A Corrected Report

Samples	VOC (g/l)	Moisture (%)	Total Volatiles(%)	Specific Gravity (25°C)
Fireshell-F10E		31.98	31.28	1.3558
		32.20	31.35	1.3550
			31.40	
			31.42	
		<1	32.09	31.36
Method:	ASTM	ASTM	ASTM	ASTM
	D3960-81	D4017-81	D2369-95	D1475-60
Date Analyzed:	1/26/09	1/23/09	1/23/09	1/23/09
Analyst:	BALO	RJ	RJ	RJ

Average values in **Boldface** type.

The methods reported for each parameter are those that are called out per EPA Method 24.

Please review the data and contact us if you have any questions or wish more information.

Barbara Obert
Laboratory Manager

BALO/law

Reviewed by: *[Signature]*

This report is submitted with the understanding that it is not to be reproduced for advertising or other purposes over our signature without express written permission from us.
We do not accept any liability concerning the use of these results.

NOT RESPONSIBLE FOR SAMPLES LEFT OVER 30 DAYS AFTER RECEIPT OF REPORT.

Connecticut Public Health Laboratory No. 0440 EPA Number CT015

AIHA and AIHA ELLAP Accredited Laboratory No. 6951

LABORATORY LOCATED AT 273 PEPE'S FARM ROAD, MILFORD, CT 06460 (203) 874-5678 FAX: (203) 874-7863